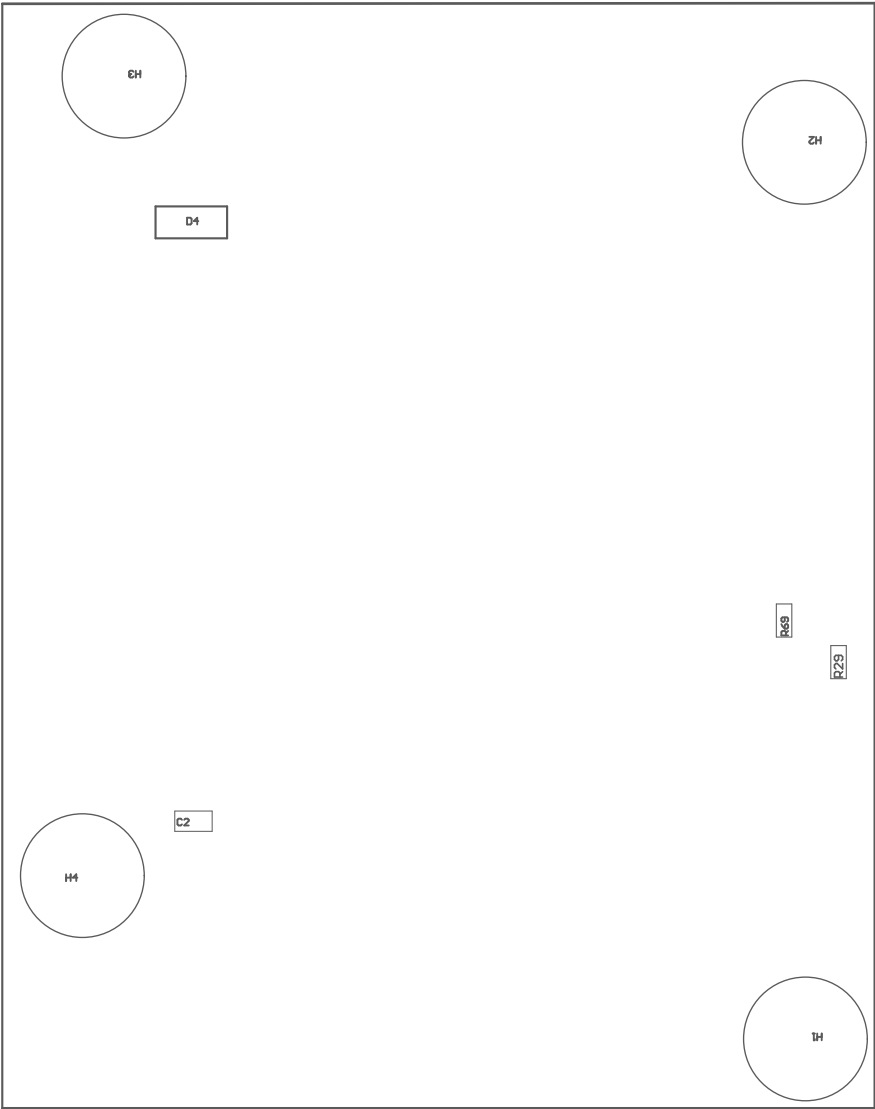


Z24 ■ These assemblies must comply with workmanship standards IPC-A-610 Class 2, unless otherwise specified.



PCB VIEWED FROM TOP SIDE	BOARD #:	MDD74	REV:	A	SUN REV:	c31e3f6dcfc7dba06a978d01e673944bddc0afe0 [Locally Modified]
	TID #:	N/A				
PLOT NAME = Top Assembly Drawing	GENERATED :	11/17/2023	1:10:29 PM	TEXAS INSTRUMENTS		



COMPONENTS MARKED 'DNP' SHOULD NOT BE POPULATED.

ASSEMBLY VARIANT: 002

PCB VIEWED FROM BOTTOM SIDE	BOARD #: M0074	REV: A	SUN REV: c3fe3f6dcfc7dba06a978d01e673944bddc0afe0 [Locally Modified]
	TID #: N/A		
PLOT NAME = Bottom Assembly Drawing	GENERATED : 11/17/2023 1:10:30 PM	TEXAS INSTRUMENTS	